



.FASHION
FASHION MODEL MANAGEMENT
VIA G. SALVA 40 20145 MILANO T. +39 02 420081
WWW.FASHIONMODEL.IT

ALTEZZA	172	HEIGHT	5'8
SENO	80	BUST	31 1/2
VITA	59	WAIST	23 1/2
FIANCHI	88	HIPS	34
OCCHI	BLU	EYES	BLUE
CAPELLI	BRONDI	HAI	BLONDE



Klaudia K.

altezza: **172**

seno: **81**

vita: **60**

fianchi: **88**

scarpe: **38**

occhi: **blu**

capelli: **biondi**

height: **5,7 1/2**

bust: **32**

waist: **23 1/2**

hips: **34 1/2**

shoes: **5**

eyes: **blue**

hair: **blond**



BOOK





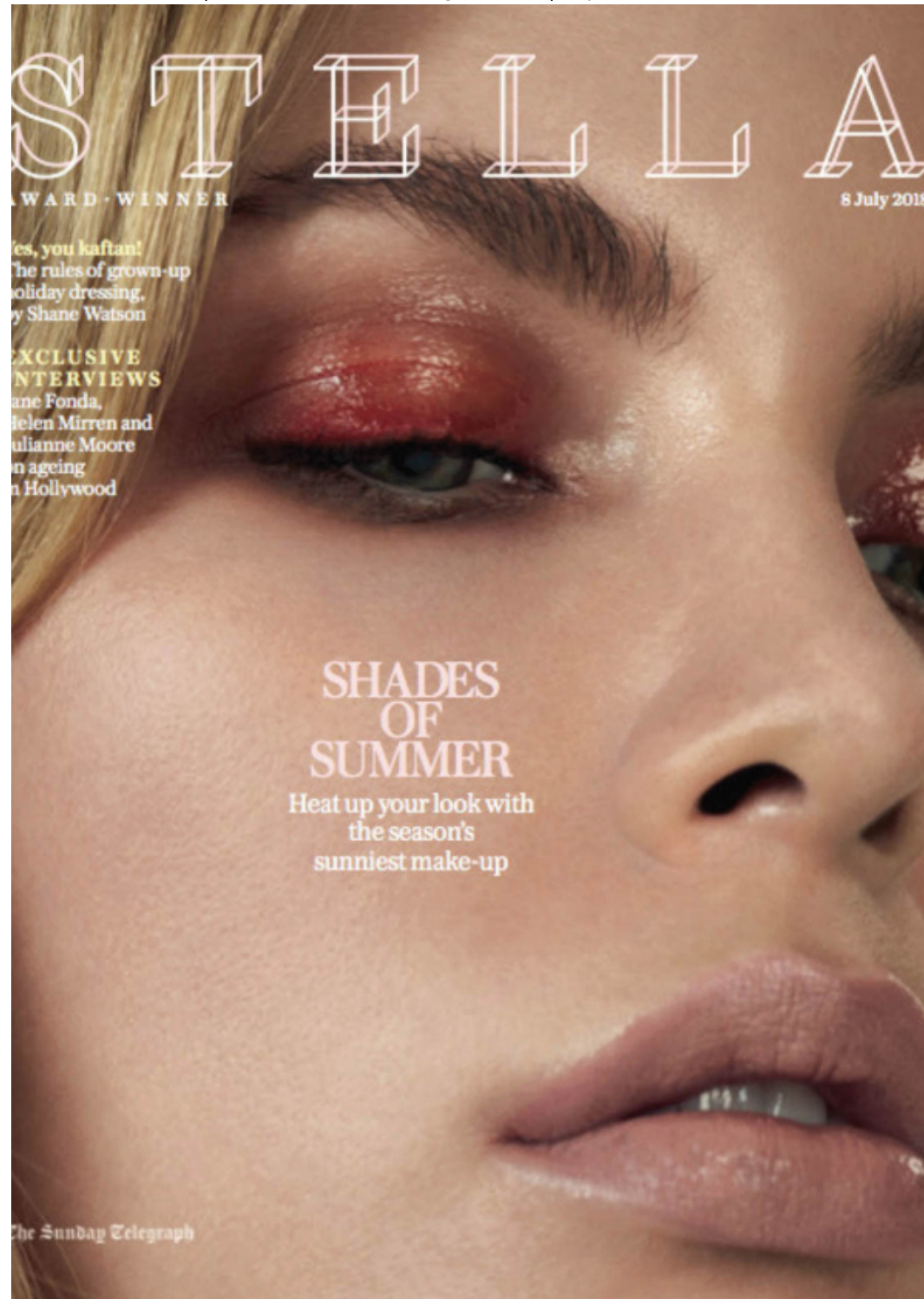












Baroudeuse *c'est vogue*⁶³

Photographe Philippe Jarrigeon. Réalisation Claire Dhelens.

*Quand le chic citadin croise le style militaro-safari,
l'aventure est au bout de la rue.*



Porte-passeport et porte-cartes doté d'une dragonne brodée de cuir, Burberry, 390 € et 180 €.
Bob, chemise, polo et shorts, Vintage Gauthier Borsarello.



**LES
JUXTAPOSITIONS
CASUAL**

À GAUCHE, VESTE
EN JEAN, **A.P.C.**,
MANTEAU EN MOUTON
RETOURNÉ ET CARDIGAN,
COACH 1941, JEAN
BA & SH. ÉCHARPE
PRADA, MOUTIFLES
EN AGNEAU, **MAX MARA**,
BOTTES **STUART**
WEITZMAN.

**LE COSTUME
D'HOMME**

À DROITE, SUR LES
ÉPAULES, VESTE EN LAINE
MÉLANGÉE, **PABLO**,
CHEMISE EN SOIE,
TAILLEUR-PANTALON EN
CORDON, ET CEINTURE,
L'ENSEMBLE **VICTORIA**
BECKHAM, FOULARD
CHARVET, SAC EN
AGNEAU, **NINA RICCI**,
BOOTS **CELINE**.

Coiffure Maxime Macé,
Maquillage Hélène Vozniar



Modestyle



BEAUTY



PREVIOUS PAGE DRESS, £1,200, VALENTINO (VALENTINOCOM); EARRINGS, £4,800, ARA WARDMAN (ARAWARDMAN.COM); RINGS, £4,800 AND £1,380, POHELLARO (POHELLARO.COM); THIS PAGE VINTAGE MONET EARRINGS, £175, SUSAN CARLAN (SUSANCARLAN.COM)

Glam glitter

The make-up equivalent of diamond earrings, glitter gives your complexion an instant kick from the sheer sparkle factor. The key is to keep your skin as real (read: not caked) as possible, with a light layer of coverage and some strategic highlighting. To avoid the dreaded 'glitter fall' over your cheeks, Naoko recommends, 'Pre-mixing the glitter with a mixing medium [such as MAC's Mixing Medium Gel, £16.50] on the back of your hand before applying. Allow it to dry slightly before opening your eye and it will stay put all night long.'



Power pairings

Remember the old-school rules that advised going for an eye or a lip (but never, ever both)? Scrap that from your make-up memory bank right now. The coolest way to don colour for summer is to go down the double duty route – pairing complimentary clashing tones on lips and eyes. Go bold with highly pigmented formulas, or pare it back slightly with softer textures and shades. 'The key is to blend, blend, blend and do the eye make-up before foundation,' says Naoko. 'It's much quicker, as you won't spend unnecessary time on correcting the skin.'



SCAN ME 