



@fashionmodel.it
@fashionmodel.it
@fashionmodel.it
+ThaisSouza@fashionmodelmanagementMilano
thaisouza
thefashionmodel

.F
FASHION MODEL MANAGEMENT
VIA G. SILVA 40, 20149 MILANO, T. +39 02 480651
WWW.FASHIONMODEL.IT
WWW.FASHIONINFLUENCERS.IT

ALTEZZA	179	HEIGHT	5'10 1/2
SENO	78	BUST	30 1/2
VITA	60	WAIST	23 1/2
FIANCHI	89	HIPS	35
OCCHIE	MARRONE SCURO	EYES	DARK BROWN
CAPELLI	CASTANO SCURO	HAIR	DARK BROWN



Thais Souza

altezza: **179**

seno: **78**

vita: **60**

fianchi: **89**

scarpe: **39**

occhi: **marrone**

capelli: **castano scuro**

height: **5,10 1/2**

bust: **30 1/2**

waist: **23 1/2**

hips: **35**

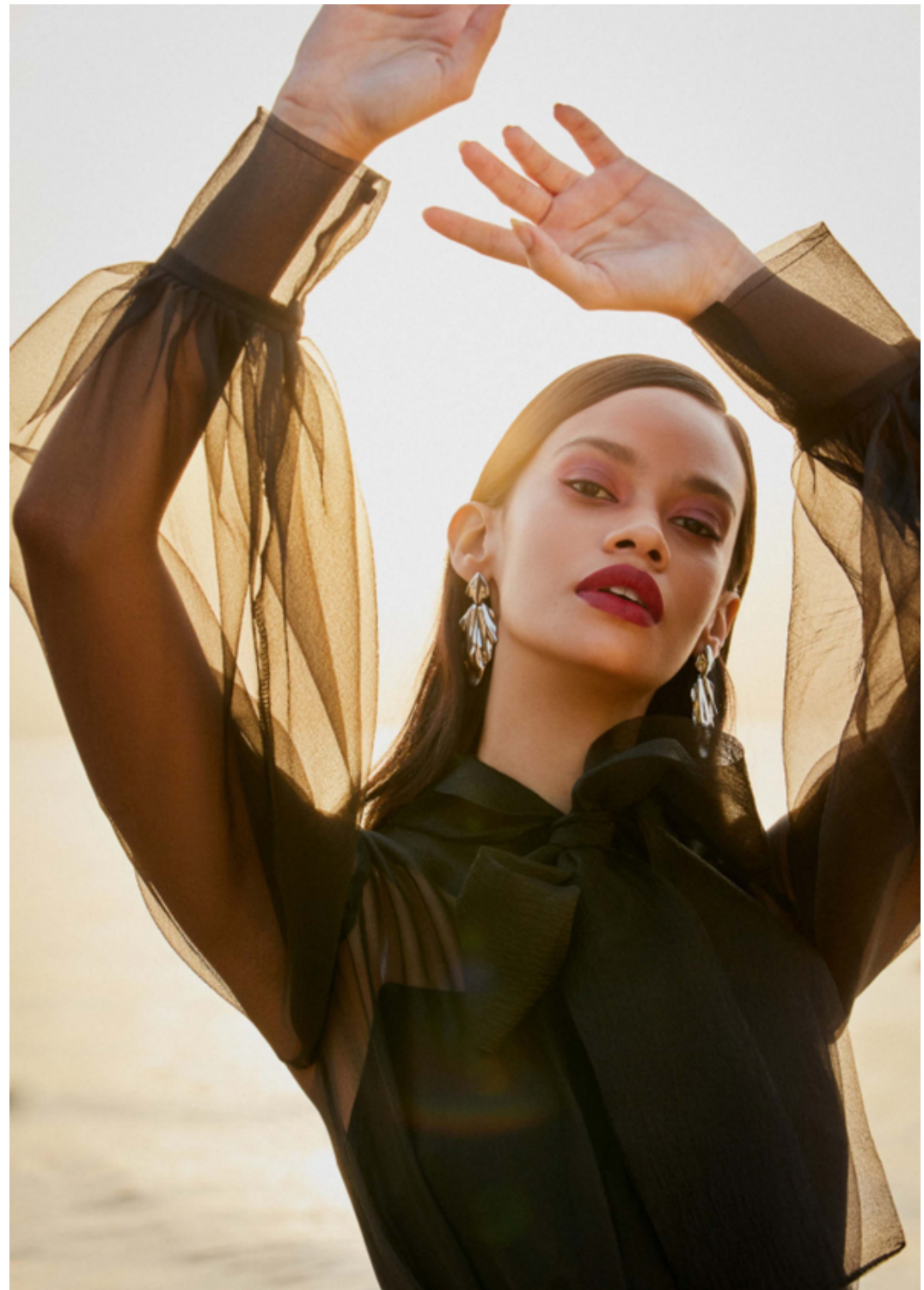
shoes: **6**

eyes: **brown**

hair: **dark brown**



BOOK











Rollkragenpulli aus Rippstrick, Jacquard-Steghose und Jacquard-Weste mit Häkelbordüre, Halskette mit Plakettenanhänger «Blind for Love», Plateaustiefeletten aus Schlangenleder, mit Strasssteinen besetzt, Gucci.







The lady in red

NO 1

Black is an eternal fashion favourite, but why not revel in the power of colour?

— THE STYLE GUIDE —

SHINE

Shimmering velvets, a sprinkling of sequins, and the soft sheen of satin and silks...

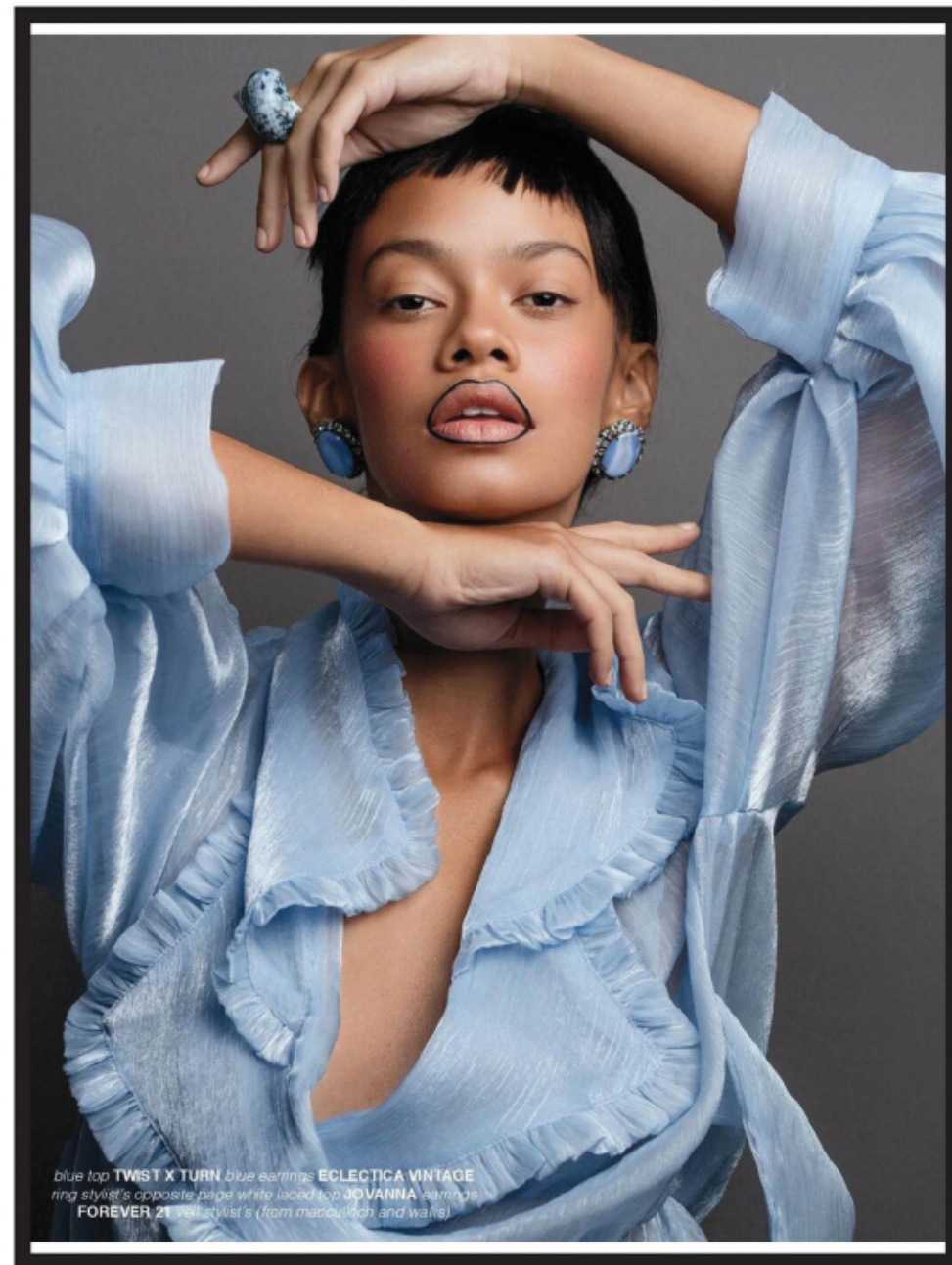
PHOTOGRAPHS BY ALEXANDER MEININGER
STYLED BY FLORRIE THOMAS



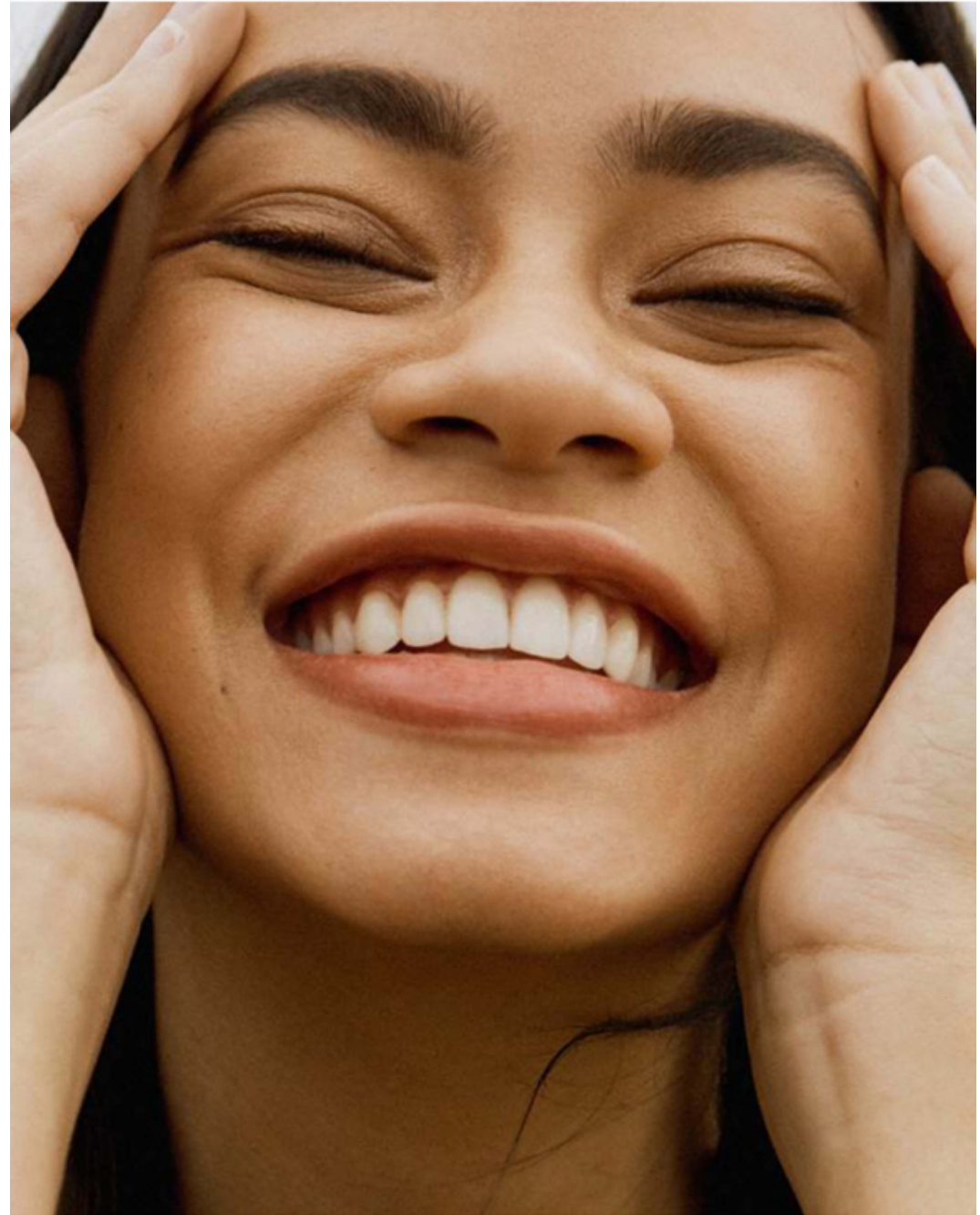
modern glamour

NO 3

A black velvet jacket is the perfect backdrop for statement accessories.



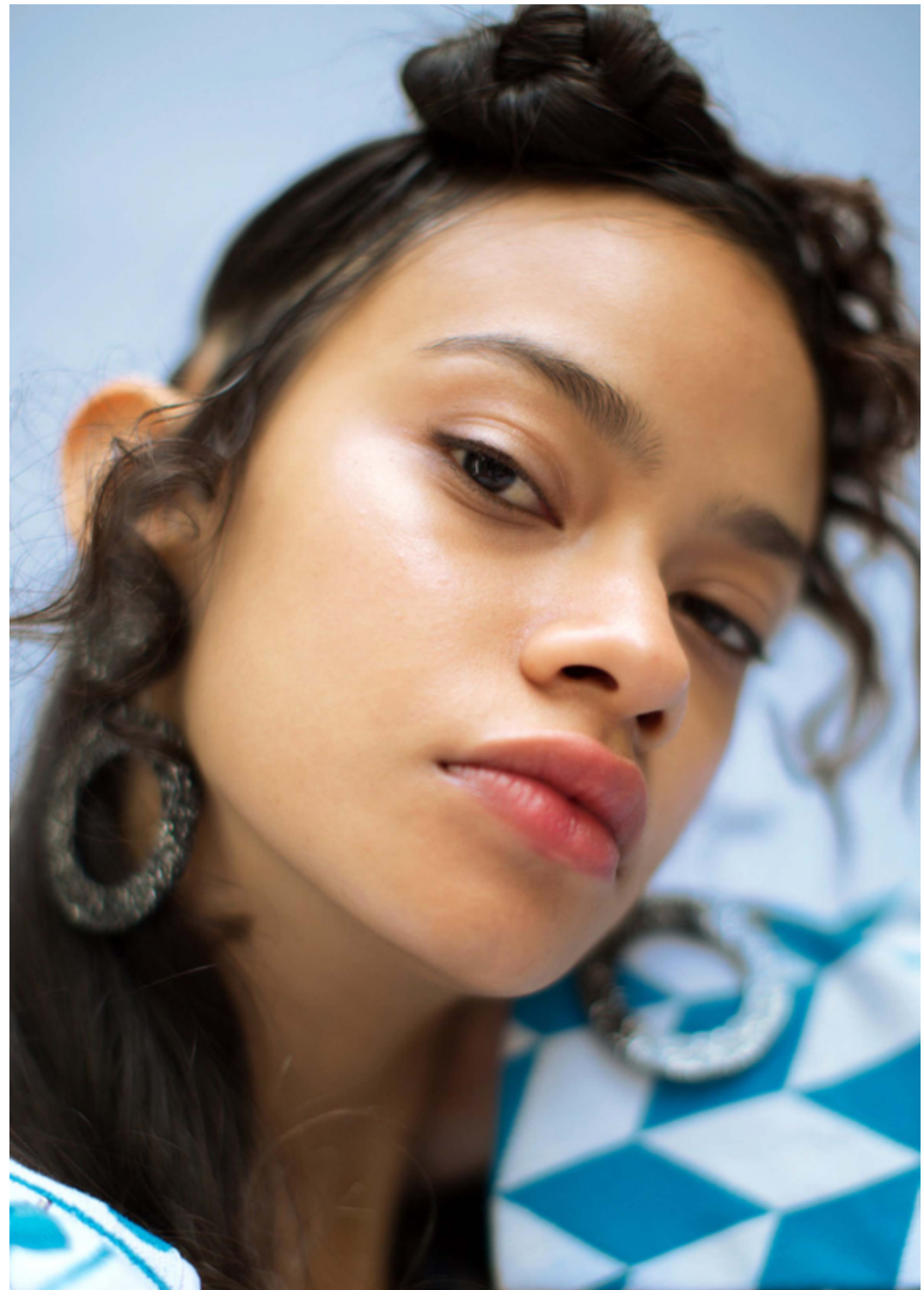




■ PROENZA SCHOULER

Coat price on request, top €270 and trousers €1,890
all Proenza Schouler; earrings €125 each Maria Black









SCAN ME 