

ALTEZZA 1.86  
VITA 94  
VITA 82  
VITA 82  
FIANCHI 97  
PANT INT 82  
PANT EXT 82  
SOLLE 43A  
SCARPE 42A  
OCCHI  
CAPELLI MARRIONI VERDI  
CASTANO SCURO

HEIGHT 6'11"  
SIZE 40 FR  
Chest 39 1/2  
Waist 32 1/2  
Hips 38 1/2  
Pant Int 32 1/2  
Pant Ext 32 1/2  
Shoes 10  
EYES BROWN GREEN  
HAIR DARK BROWN

@fashionmodel.it  
@fashionmodel.it  
@fashionmodel.it  
thefashionmodel

**.F**  
FASHION MODEL MANAGEMENT  
WWW.FASHIONMODEL.IT  
WWW.FASHIONINFLUENCERS.IT  
VA G. SILVA 40 - 20149 MILANO T. +39 02 48061

# Henry Mello

altezza: **186**

petto: **109**

vita: **83**

fianchi: **100**

scarpe: **42.5**

occhi: **marrone-verde**

capelli: **castano scuro**

height: **6,1 1/2**

chest: **43**

waist: **32 1/2**

hips: **39 1/2**

shoes: **8.5**

eyes: **brown-green**

hair: **dark brown**



BOOK

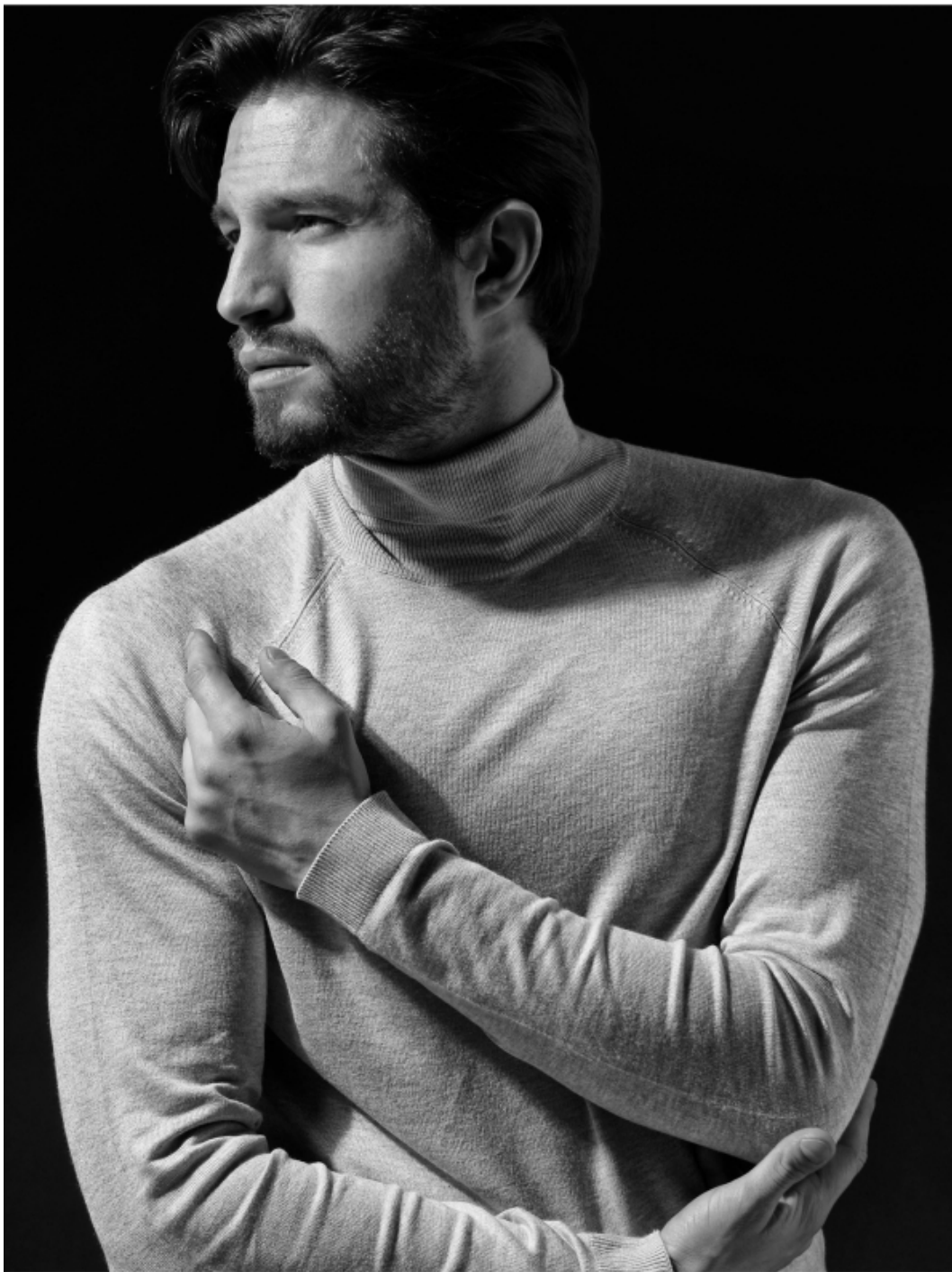


















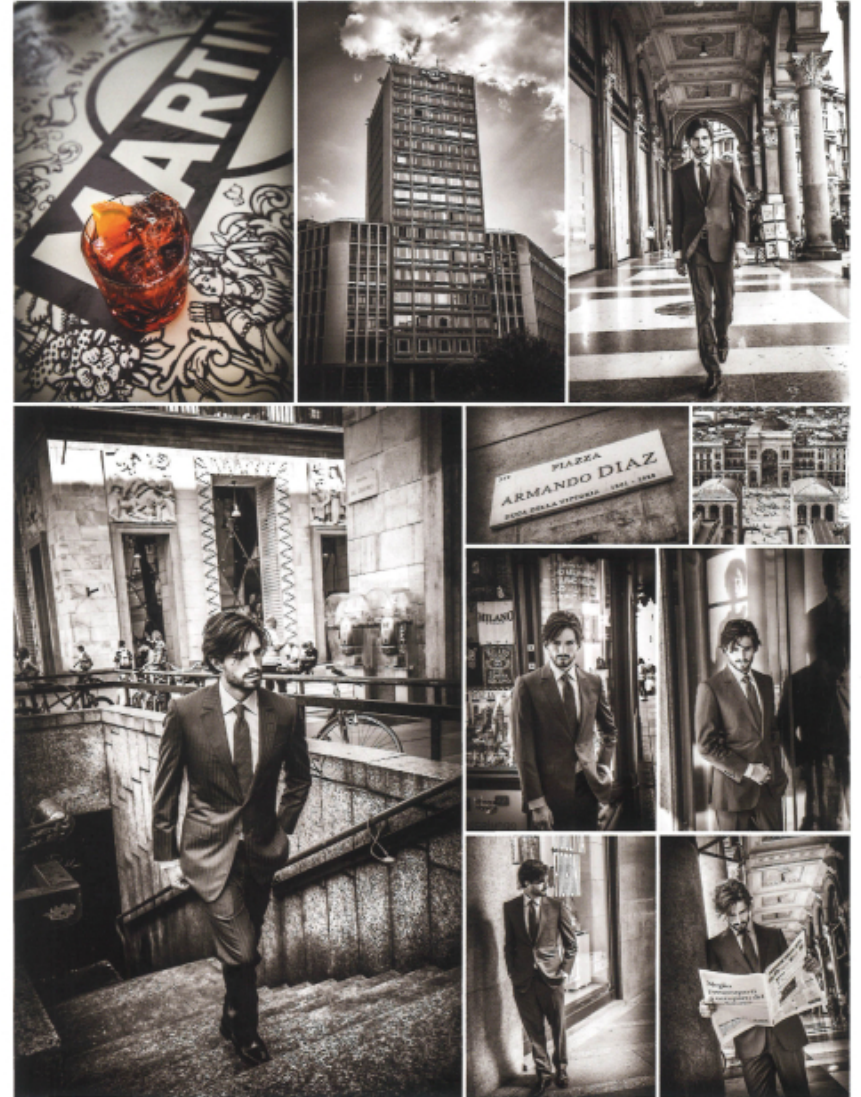








Photo (c) L. van Carlssoon



Depuis 1958, la Terrazza Martini domine le centre historique de Milan et offre, depuis le dernier étage du gratte-ciel de la Piazza Diaz, une vue extraordinaire sur le Duomo Et sur la Galerie Vittorio Emanuele II, un passage couvert qui ressemble plus à un musée qu'à un restaurant de prestige. Francesco Smalto

- Costume Piasta Couture, étoilé, deux boutons, classe Holland & Sherry Super 150's
- Chemise crasse rose, coton 11 x 16
- Cravate Couture 100% soie naturelle.

Since 1958, Terrazza Martini has dominated Milan's historic centre, offering an extraordinary view over the Duomo and the Galleria Vittorio Emanuele II, a covered passage full of prestigious stores and restaurants from the highest floor of the Piazza Charvet/Veronei. Francesco Smalto

- Two button, straight cut, Haida Couture suit, Holland & Sherry Super 150.
- Hand-dyed shirt, end-on-end cotton.
- Handmade tie, 100% natural silk.











**SCAN ME** 