



ALTEZZA 1,86  
PETTO 104  
VITA 74  
SCARPE 44,5  
OCCHI BLU  
CAPELLI BIONDI

HEIGHT 6'1  
CHEST 34 1/2  
WAIST 28 1/2  
SHOES 10.5  
EYES BLUE  
HAIR BLONDE

[f](https://www.facebook.com/fashionmodel.it) @fashionmodel.it  
[i](https://www.instagram.com/fashionmodel.it) @fashionmodel.it  
[t](https://www.twitter.com/fashionmodel.it) @fashionmodel.it  
[p](https://www.pinterest.com/fashionmodel.it) @fashionmodel.it

**.FASHION**  
FASHION MODEL MANAGEMENT  
SRL  
VIA S. SEBASTIANO 20  
00187 ROMA (RM)  
WWW.FASHIONMODEL.IT  
WWW.FASHIONMODEL.LICENSING.IT

## Svend T.

altezza: **186**

petto: **88**

vita: **72**

fianchi: **90**

scarpe: **44.5**

occhi: **blu**

capelli: **biondi**

height: **6,1 1/2**

chest: **34 1/2**

waist: **28 1/2**

hips: **35 1/2**

shoes: **10.5**

eyes: **blue**

hair: **blond**



BOOK



# FORCE ONE®

THE LUXURY EXPERIENCE



© 2015/2016 - Photo: Stefano Ferrara

31

I DREAM OF ARGENTAIA ■ HELMUT NEWTON ■ HOFA ■ DOLCE&GABBANA JEWELS&WATCHES  
VERSACE ■ HIGH JEWELLERY ■ FOGLIZZO ■ NEW BENTAYAGA HYBRID ■ WINTER DESTINATIONS



Left: Massi Daresi jacket, blouse, belt, gloves and derby  
right: Faux fur, aviator hat, trousers and flasks, blouse  
DOLCE&GABBANA

Right: Leather hat, BORGALINO

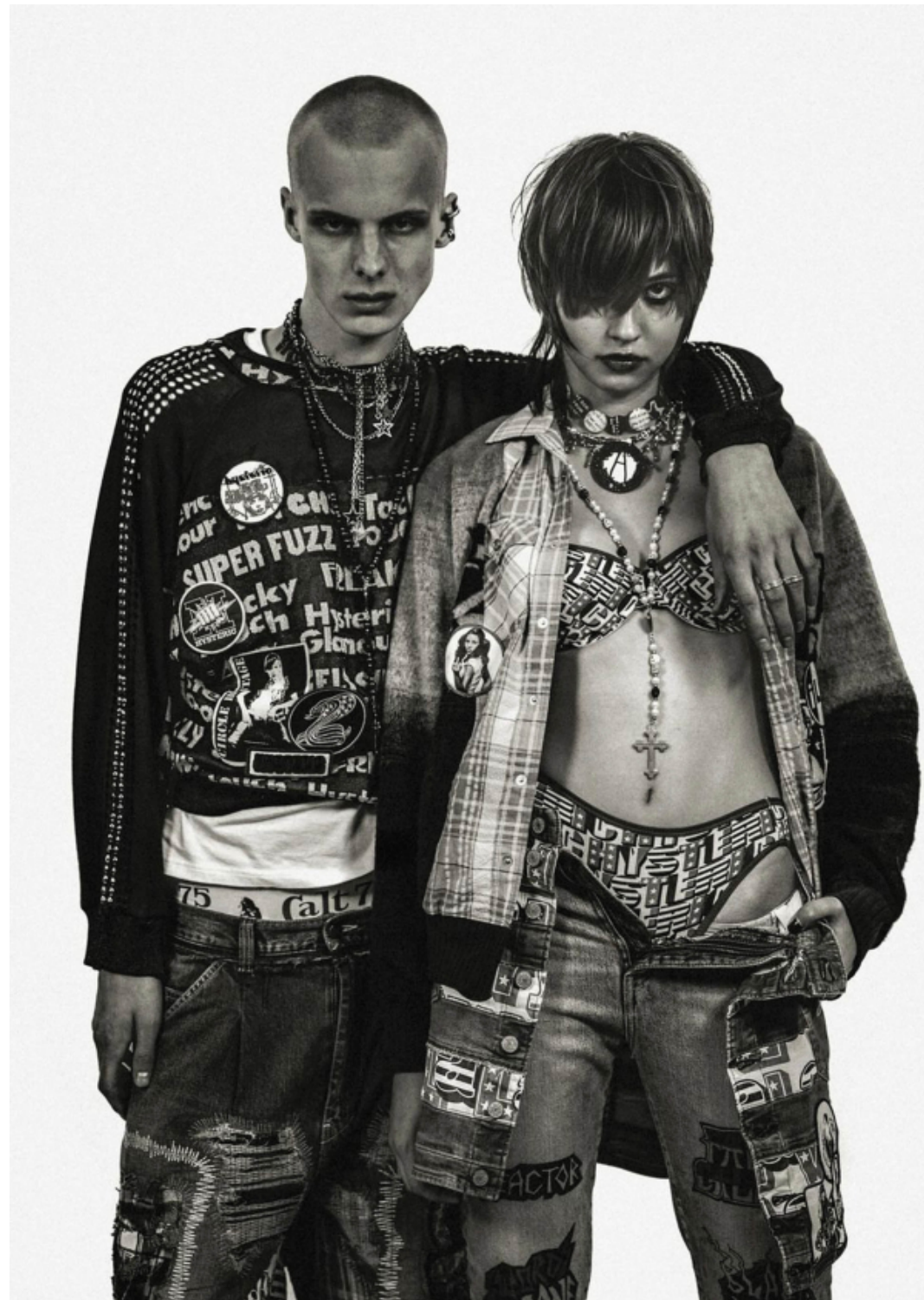


















**DRIFTER MAC COAT**







**AFTER PRAY**

















**SCAN ME** 