



@digitalyx

ALTEZZA	1,79	HEIGHT	6'10"
SENO	77	BUST	30 1/2
VITA	62	WAIST	24 1/2
FIANCHI	86	HIPS	34
SCARPE	39	SHOES	6
OCCHI	VERDE	EYES	GREEN
CAPELLI	CASTANI	HAIR	BROWN



**.FASHION**  
FASHION MODEL MANAGEMENT  
VIA G. GALVA. 40 20149 MILANO, T. 02 70 000861  
WWW.FASHIONMODEL.IT  
@fashionmodel.it



# Alix

altezza: **179**

seno: **77**

vita: **62**

fianchi: **86**

scarpe: **39**

occhi: **verde**

capelli: **castano**

height: **5,10 1/2**

bust: **30 1/2**

waist: **24 1/2**

hips: **34**

shoes: **6**

eyes: **green**

hair: **brown**

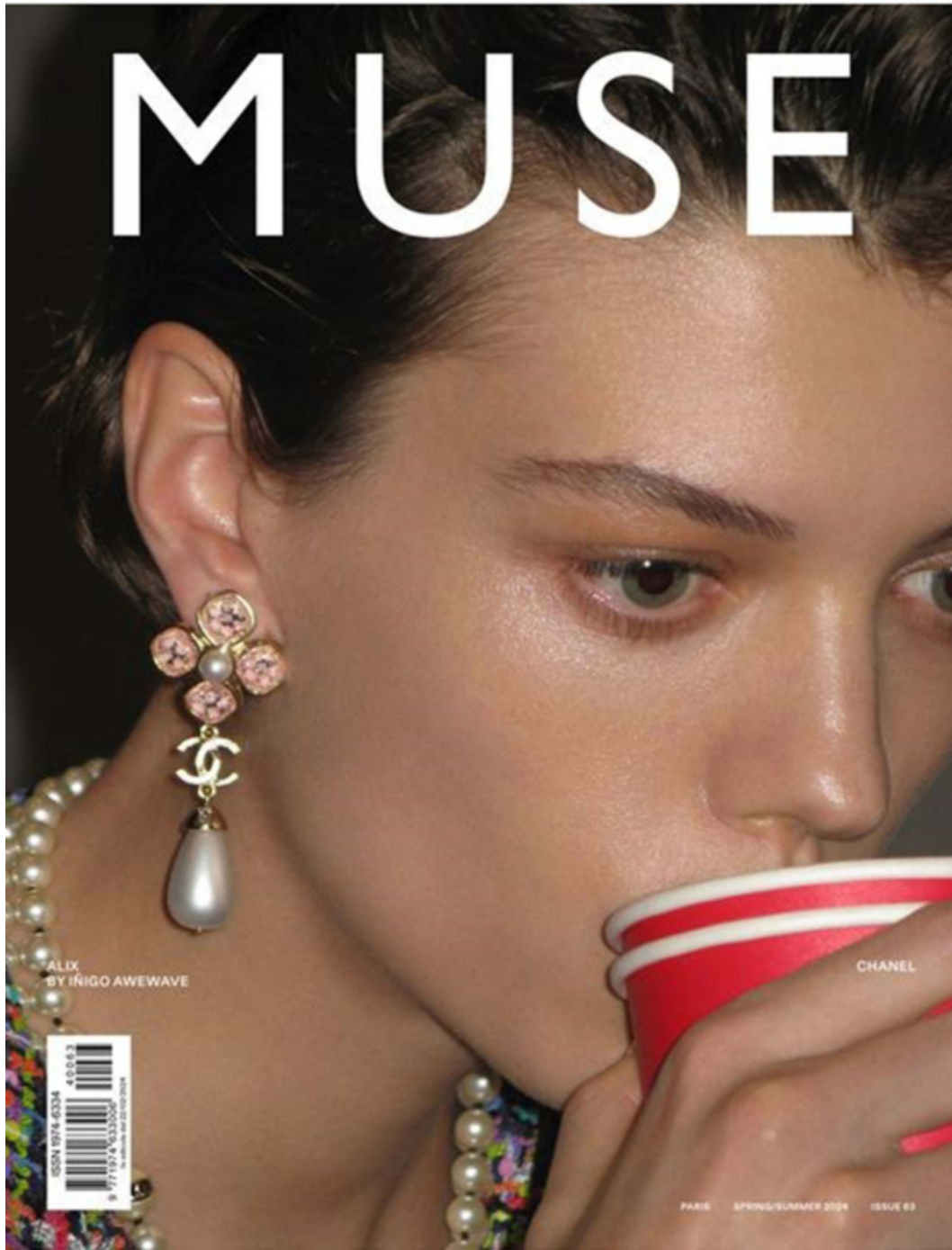


BOOK



Giacca e pantaloni di mohair, calze, mocassini, orecchini d'oro della collezione *Eternal Gold*, tutto PRADA.  
Nella pagina accanto. Caban di cotone e pelle, polo, shorts, cintura di pelle, gonna con ricamo passavela, tutto PRADA.







# NET-A-PORTER *presents* PORTER

With  
*ALIX*  
*BOUTHORS*



## *After dark*

From *TOUGH-LUXE*  
LEATHER to *sensual*  
SHEER fabrics and  
minimal *metallics* –  
EMBRACE *undone*  
elegance this season  
with Saint Laurent,  
 Khaite and The Row







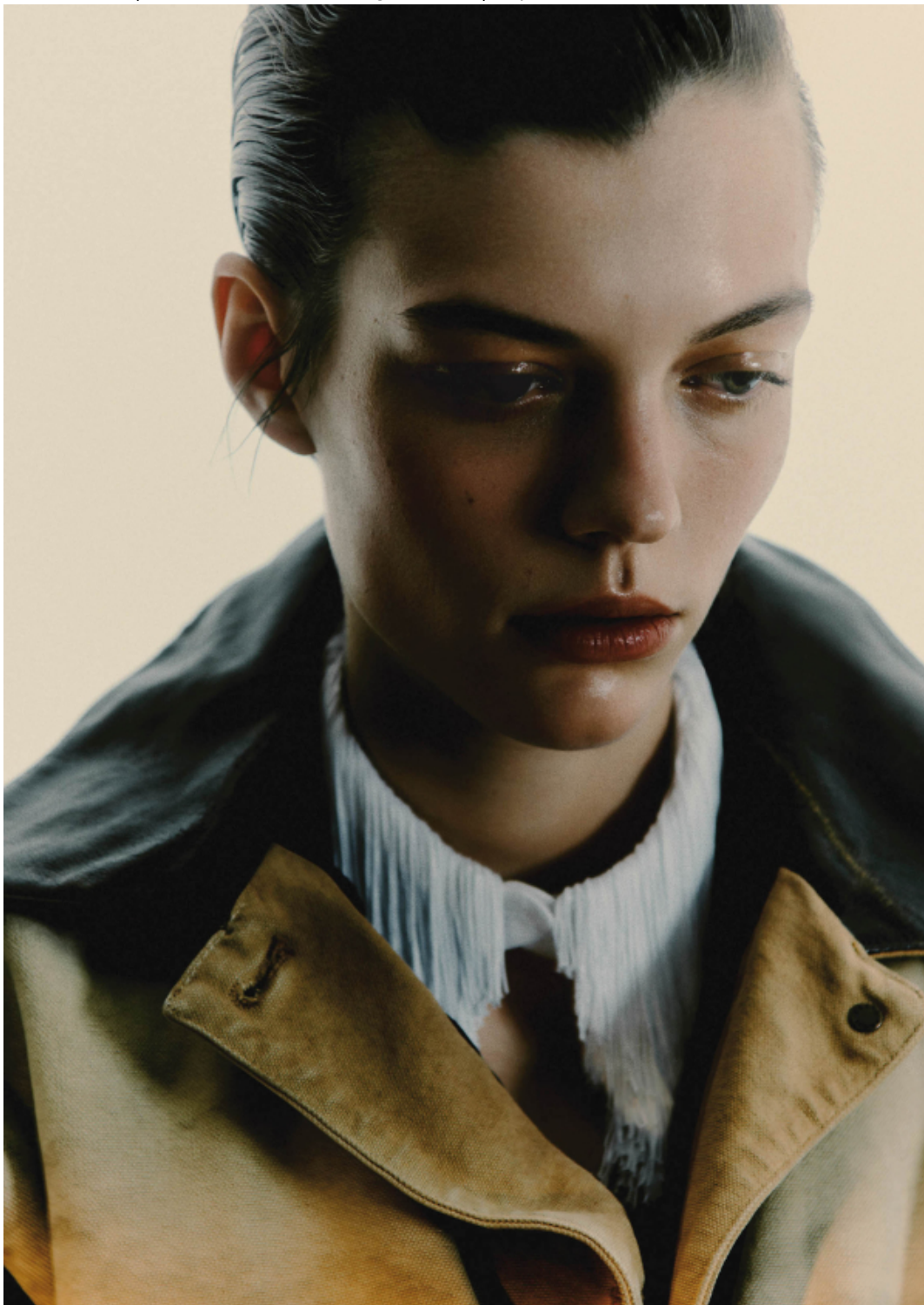














Chiodo di pelle, culotte,  
bracciali di legno e metallo,  
tutto SAINT LAURENT  
BY ANTHONY VACCARELLO;  
collant, WOLFORD.



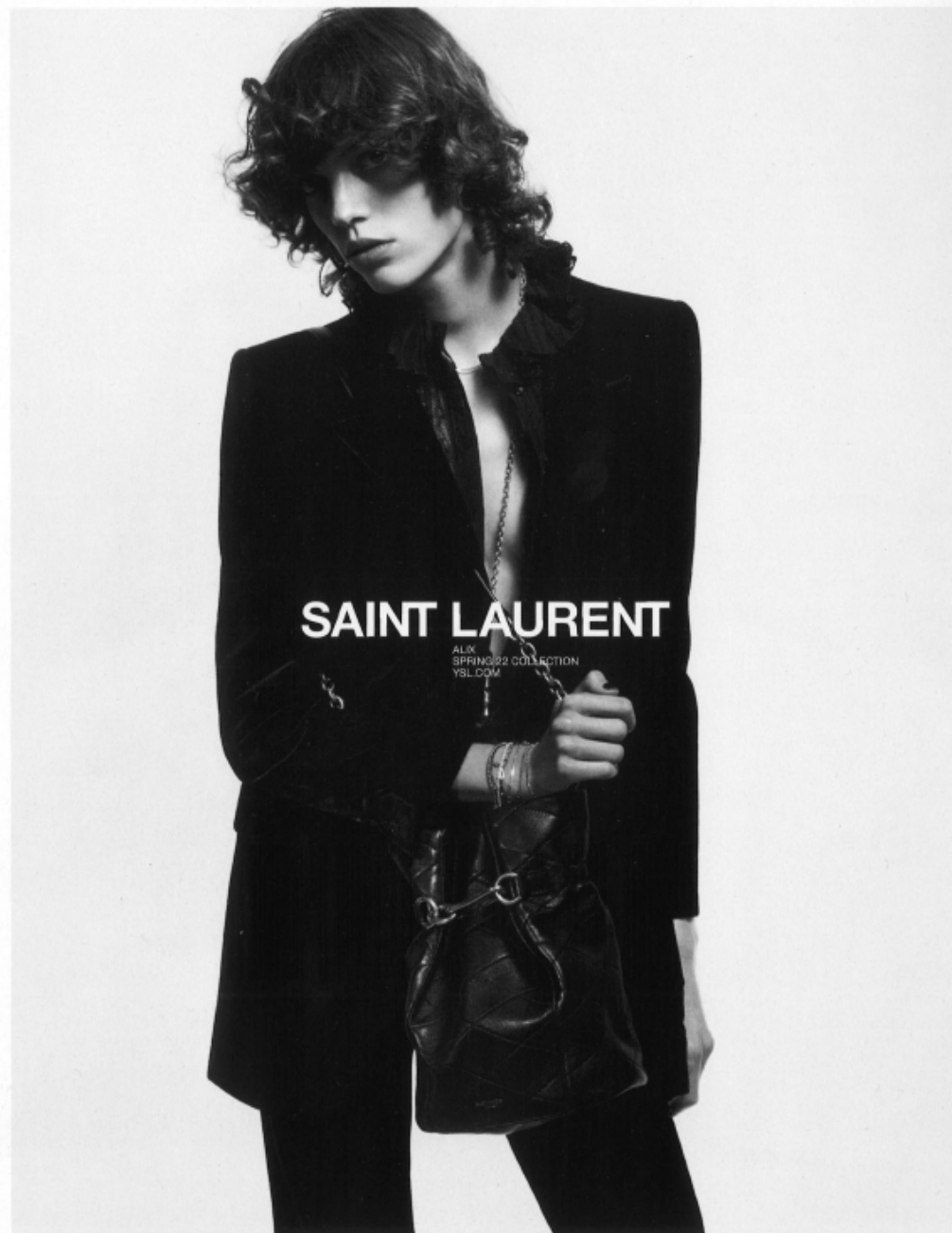
Abito bustier di lana, N°21  
BY ALESSANDRO DELL'ACQUA,  
collant, WOLFORD.

Models: ALIX BOUTHORS@Fashion;  
DARIA KOSHKINA@Ford;  
BEAUISE FERWERDA@Platform.  
Hair: EUGENE SOULEIMAN.  
Make-up: PETROS PETROHILOS.  
Styling assistant: BENEDETTA BARUFFI.  
Manicurist: HANAÉ GOMRI.

Casting director: ANITA BITTON.



**CELINE**













**SCAN ME** 