



ALTEZZA 1 88
TAGLIA 48L
PETTO 100
VITA 77
FIANCHI 99
PANT. INT. 68
COLLO 40
SCARPE 45,5
CAPELLI BIONDI
OCCHI BLU
HEIGHT 6'2
SIZE 38L
CHEST 39 1/2
WAIST 30 1/2
HIP 39
INSEAM 34 1/2
COLLAR 16
SHIRT 11 1/2
SHOES 11.5
HAIR BLONDE

.F
FASHION

FASHION MODEL MANAGEMENT VIA G. SILVA 40 20149 MILANO T. +39 02 480861 WWW.FASHIONMODEL.IT

Taras

altezza: **188**

petto: **100**

vita: **77**

fianchi: **99**

scarpe: **45.5**

occhi: **blu**

capelli: **biondo**

height: **6,2**

chest: **39 1/2**

waist: **30 1/2**

hips: **39**

shoes: **11.5**

eyes: **blue**

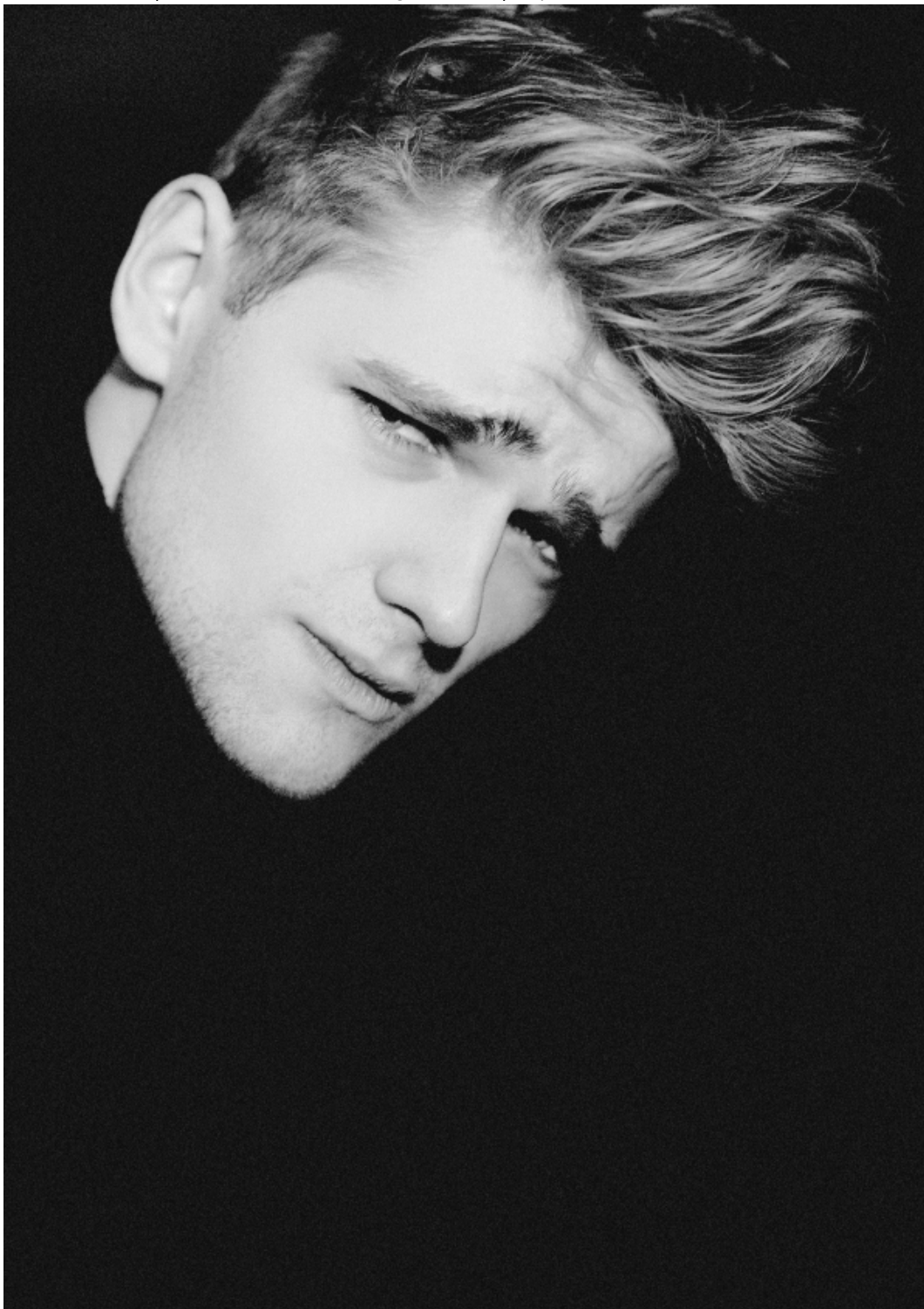
hair: **blond**



BOOK













Giacca **COSTUME NATIONAL** / Cappa in maglia **FRANKIE MORELLO** / Camicia **HTC** /
Pantalone **PRINGLE OF SCOTLAND** / Anfibii **JOHN RICHMOND**



Capotto in montone **SALVATORE FERRAGAMO**
Pantalone **VERSACE**
Cintura **FABRIZIO MANCINI**

MADE

for men / SPRING 2014

FRESH SPRING STYLE

Graphic prints +
pumped-up kicks

**JAMES
MARSDEN**
X-Man & new
style icon

**THE MADE
GUIDE
TO BEER!**
More reasons
to love your
favourite beverage



the
**TRAVEL
ISSUE**
Road-tripping
on the East Coast
& the American
Southwest



**THE GAME OF
THRONES**
ICELAND
ADVENTURE







Capo LAFRE' / Giubbotto GUCCI / Camicia DIESEL / Pantaloni MOSCHINO / Guanti SERMONETA / Stola di pelliccia GAETANO NAVARRA / Occhiali VINTAGE Collection
Make-up and Hair Sissi Bellogli@low management artists using MAC cosmetics / Model Taras Kohune@Fashion

